



Gain better control of all your work and assets and help strengthen mobile workforce capabilities

Highlights

- **Get a single-vendor solution to improve productivity of technicians, managers and inspectors by delivering instant access to remote and mobile asset data**
- **Reduce unnecessary data entry, travel and paperwork and raise first-time fix rates by providing field technicians with key asset and work-related information and managers with real-time job progress**
- **Help reduce data errors and miscommunications by entering and accessing data directly—onsite—through wireless mobile devices**
- **Improve inventory and spare parts management through accurate inventory tracking and auditing**
- **Employ open, scalable technology**
- **Gain real business and compliance benefits via real-time reporting and monitoring**

The right information to the right people at the right time is the basis of proper asset management for today. Processing facilities, natural gas pipelines, manufacturing plants, trucking fleets, hospitals, and office complexes all require management by a mobile workforce that is constantly gathering, accessing, and sharing information, often across large geographical distances.

Unfortunately, many of today's mobile workforces are still hampered by manual, paper-based systems, which lead to:

- *Tedious, error-prone paperwork that reduces productivity and degrades service*
- *Unnecessary trips to and from the field*
- *Poor decision making due to incomplete, outdated, or inaccurate information*
- *Lost tools, parts, equipment, or other valuable assets*
- *Regulatory fines or penalties due to compliance violations*
- *A lack of quality information for strategic improvements in business processes*

Improve productivity and reduce errors and waste with on-the-spot asset management

IBM® Maximo® Mobile Suite includes IBM Maximo Mobile Work Manager, IBM Maximo Mobile Asset Manager, and IBM Maximo Mobile Inventory Manager. These applications are versatile, easy-to-use applications designed specifically for complex asset management for your mobile workforce. Your mobile workers can use the software with handheld devices to perform their work remotely, sending and receiving critical information when and where it is needed.

Maximo Mobile Suite supports a variety of communication methods and device options, while delivering superior capabilities to workers with and without wireless coverage.

- *Technicians can spend more time maintaining their company's valuable equipment*
- *Storeroom managers can conduct quick, accurate cycle counts*
- *Supervisors can plan and schedule the work and crew more efficiently*
- *Management can improve its strategic planning, scheduling, compliance reporting, and internal quality control*

Take advantage of comprehensive mobile solutions

Maximo mobile solutions consist of the following highly integrated products, providing a full range of capabilities.

IBM Maximo Mobile Work Manager

A powerful mobile work management application that enables maintenance and operations professionals to streamline field-based work processes based on timely access to:

- *Work orders, service requests, and tickets*
- *Accurate asset and location information*
 - *Spare parts, subassemblies, meters, and attributes*
- *Historical details*
- *Attached documents*
- *Safety and hazards*
- *Work plans*

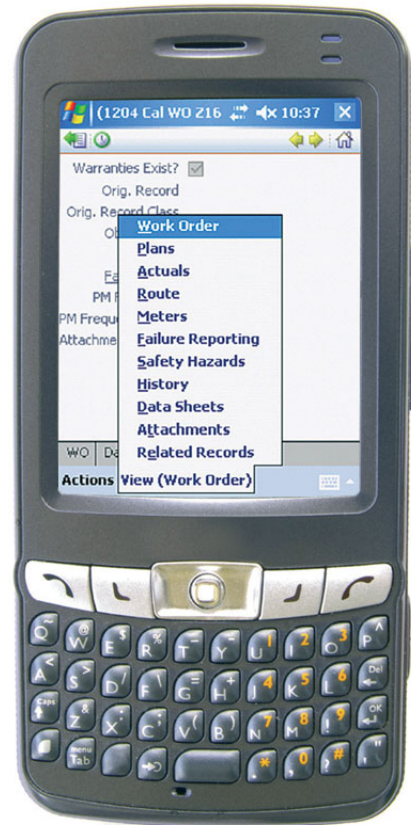
Mobile workers get detailed work order information, including asset and location details, job plans, safety information, scheduled dates, and priorities. In wireless and cellular networks, the list of work can be intelligently updated based on profile settings.

- *Manage work orders and tickets from mobile devices*
- *Create work orders on demand, including follow-up work orders*
- *View job plans, safety plans, and asset repair histories*
- *Record work status, materials, time and attendance, failure codes, tools, comments, and more*
- *Electronically capture signatures for work orders and other completed tasks*
- *Perform routes and rounds, meter readings, observations, and inspections*
- *Move and swap assets*

Using Maximo Mobile Work Manager with IBM Maximo Calibration

The features in Maximo Mobile Work Manager take advantage of the data sheets defined in the Maximo Calibration add-on product for IBM Maximo Asset Management.

Maximo Calibration gives users the ability to record instrument readings in a mobile environment. Out of Tolerance messages are automatically generated as soon as the readings are entered. Calibration status of the instrument is automatically determined based on the recorded readings.



Maximo Mobile Work Manager with Calibration option

IBM Maximo Mobile Inventory Manager

Helps ensure that storerooms can manage, issue, receive, and track inventory items properly. The product combines Maximo inventory functions with an easy-to-use mobile user interface, allowing the user to perform tasks where they occur and not be tethered to a workstation. This helps reduce paperwork and manual errors and to provide more accurate information to the field.

- *Manage storerooms using mobile devices*
- *Perform physical cycle counts*
- *Issue and return inventory*
- *Perform full receiving processes, including receipt inspections and asset serialization*
- *Use bar code and RFID capabilities for inventory tracking and management*
- *Search for parts by number, equipment, description, or storeroom*
- *Store and forward data when continuous connections are not feasible*

IBM Maximo Mobile Asset Manager

Helps asset managers manage, audit, and track assets, locations and configuration items properly. The application combines Maximo asset functions with an easy-to-use mobile user interface, allowing asset managers and auditors to perform tasks where they occur and

not be tethered to their desks. This helps to reduce paperwork and manual errors and to provide more accurate information to management and the field.

- *Manage assets, locations, configuration items, routes, and collections using mobile devices*
- *Audit your physical asset inventory*
- *Create assets, locations, and configuration items*
- *Create and manage routes, rounds, and collections*
- *Move and swap assets*
- *Request maintenance work or service requests*
- *Verify and update configuration and state of assets*

Adopt an open, flexible, and scalable approach

Maximo mobile solutions are built with open standards-based technology, including XML and Java™, making configuration and deployment easier.

By supporting multiple devices and various communication methods, the products enable mobile workers to work remotely with what they have and with the communication method that suits them.

In addition, your mobile workers can also enjoy flexible data access in or out of coverage areas. While in coverage, mobile workers can update work in the field and access Maximo mobile solution data in real time, thus providing instant feedback on job progress and asset conditions. While out of coverage, mobile workers can access data from an intelligent database stored on their devices.

Realize solid business and compliance benefits

Maximo mobile solutions support a business approach to asset management, helping to support compliance, improve efficiencies, increase productivity, and enhance decision making. They provide your operations with a single point of administration to manage users, applications, and data entitlements—and help reduce costs related to:

- *Meeting service level agreements (SLAs)*
- *Inaccurate and illegible data*
- *Delivering timely work assignment detail*
- *Ensuring regulatory compliance for Food and Drug Administration (FDA), Occupational Safety and Health Administration (OSHA) and other reporting requirements*



Increase productivity and asset control for your mobile workers and managers

Maximo mobile solutions enable mobile workers to complete more planned work, eliminate nonproductive activities, and reduce paperwork and data entry. Having immediate data access onsite leads to higher first-time fix rates.

For managers, the software helps turn data into actionable information for analysis, feedback, and reporting. Armed with quality information, managers can design and implement improved SLA management and reliability practices for mobile solutions and improve work and inventory management capabilities across the organization.

For more information

To learn more about how IBM Maximo Mobile Work Manager, IBM Maximo Mobile Inventory Manager and IBM Maximo Mobile Asset Manager can help strengthen the capabilities of your mobile workforce, contact your IBM representative or IBM Business Partner, or visit ibm.com/tivoli.

Additionally, IBM Global Financing can tailor financing solutions to your specific IT needs. For more information on great rates, flexible payment plans and loans, and asset buyback and disposal, visit: ibm.com/financing

© Copyright IBM Corporation 2009

IBM Corporation
Software Group
Route 100
Somers, NY 10589
U.S.A.

Produced in the United States of America
June 2009
All Rights Reserved

IBM, the IBM logo and ibm.com are trademarks or registered trademarks of International Business Machines Corporation in the United States, other countries, or both. If these and other IBM trademarked terms are marked on their first occurrence in this information with a trademark symbol (® or ™), these symbols indicate U.S. registered or common law trademarks owned by IBM at the time this information was published. Such trademarks may also be registered or common law trademarks in other countries. A current list of IBM trademarks is available on the Web at "Copyright and trademark information" at ibm.com/legal/copytrade.shtml.

Java and all Java-based trademarks and logos are trademarks of Sun Microsystems, Inc. in the United States, other countries, or both.

Other company, product and service names may be trademarks or service marks of others.

References in this publication to IBM products and services do not imply that IBM intends to make them available in all countries in which IBM operates.

Product data has been reviewed for accuracy as of the date of initial publication. Product data is subject to change without notice. Any statements regarding IBM's future direction and intent are subject to change or withdrawal without notice, and represent goals and objectives only.

THE INFORMATION PROVIDED IN THIS DOCUMENT IS DISTRIBUTED "AS IS" WITHOUT ANY WARRANTY, EITHER EXPRESS OR IMPLIED. IBM EXPRESSLY DISCLAIMS ANY WARRANTIES OF MERCHANTABILITY, FITNESS FOR A PARTICULAR PURPOSE OR NON-INFRINGEMENT. IBM products are warranted according to the terms and conditions of the agreements (e.g. IBM Customer Agreement, Statement of Limited Warranty, International Program License Agreement, etc.) under which they are provided.



Recyclable, please recycle.

TIS10274-USEN-02